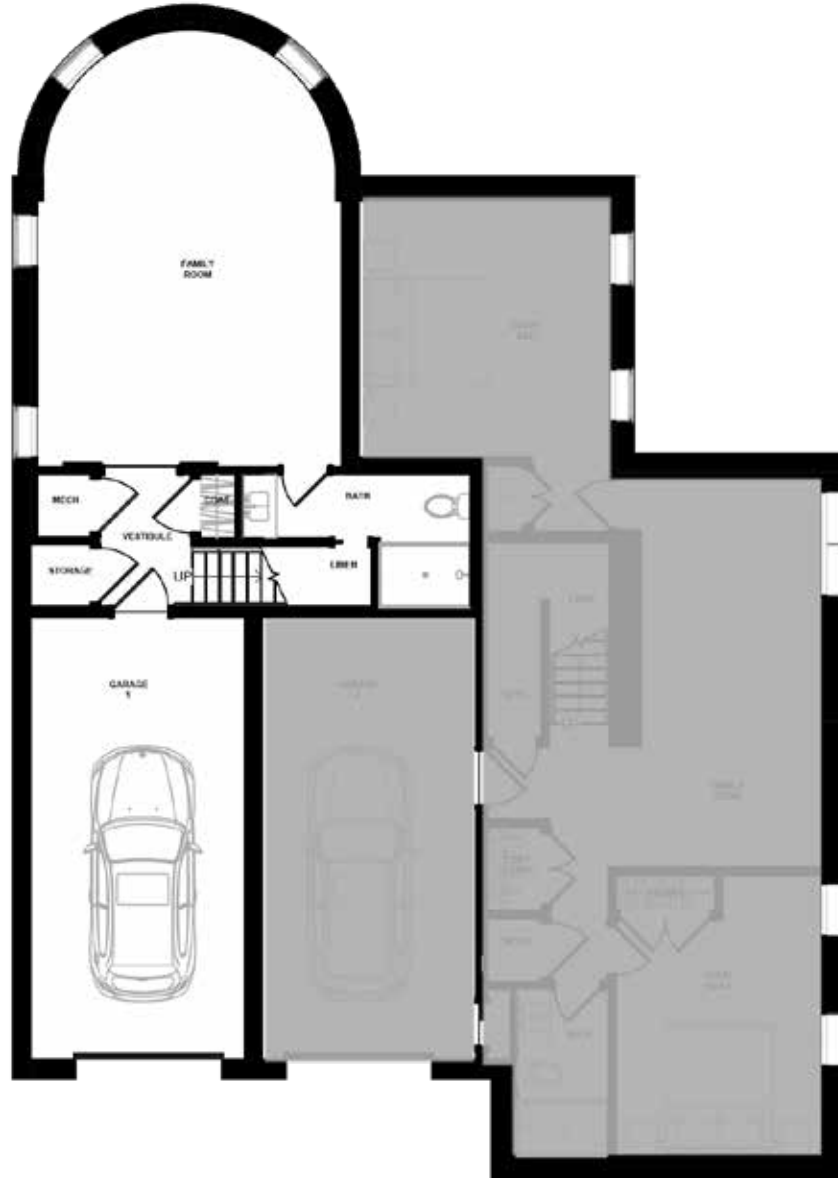


RESIDENCE 1

Ground Level

*two sixty one
tappan street*



COMPASS

BUSHARI

The provided floor plan is for illustrative purposes only and may not be entirely accurate or to scale. It is intended to give a general representation of the property's layout and dimensions. The actual measurements, proportions, and features of the property may differ from those depicted in the floor plan. It is highly recommended to verify the dimensions, room sizes, and overall layout through an independent inspection or by consulting with a professional surveyor or architect. Any discrepancies between the floor plan and the physical property should be assessed and confirmed during an in-person visit or through appropriate channels. This floor plan disclosure is provided to ensure that potential buyers are aware of the limitations and potential discrepancies that may exist in the accuracy of the floor plan. It is essential to rely on verified measurements and professional advice when making decisions related to the property.

RESIDENCE 1

First Floor

*two sixty one
tappan street*



COMPASS

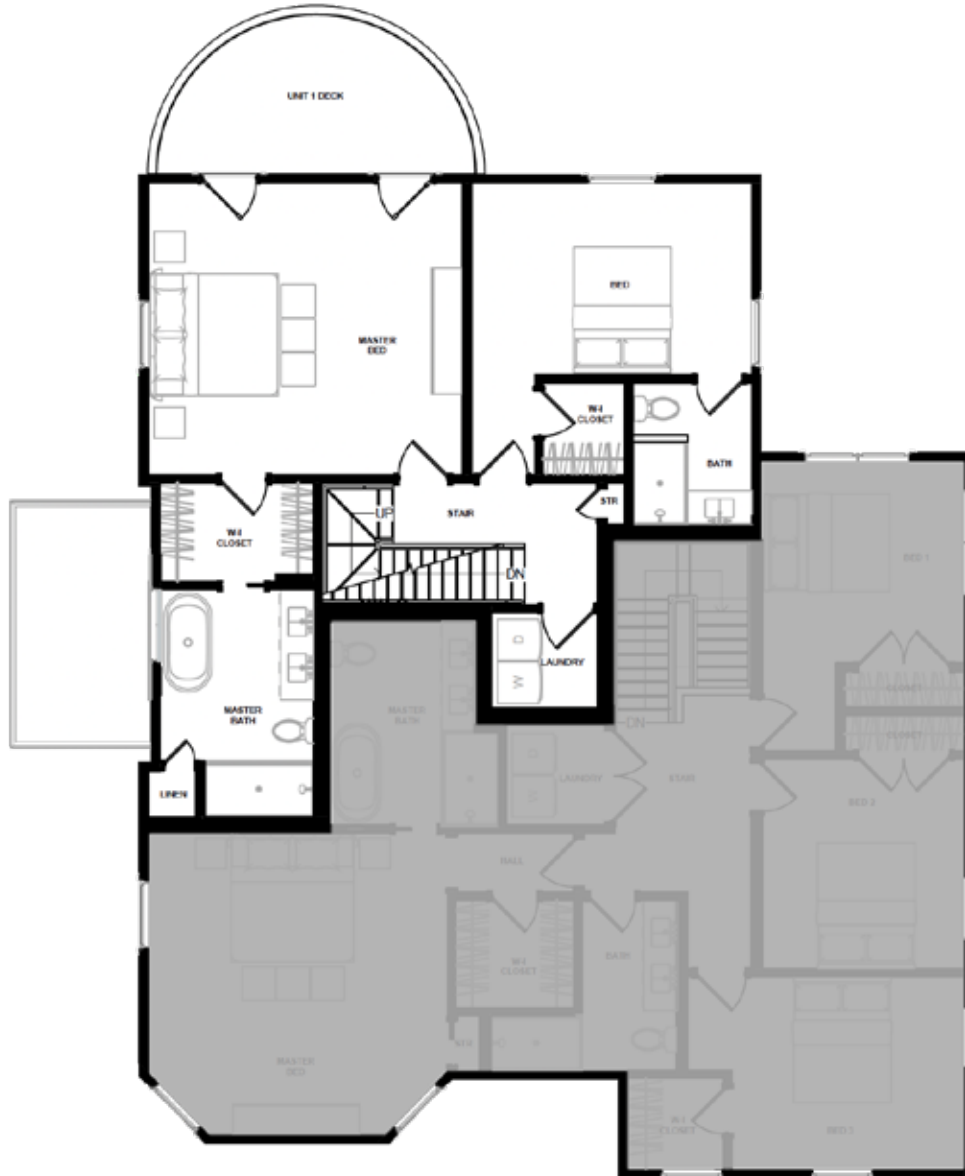
BUSHARI

The provided floor plan is for illustrative purposes only and may not be entirely accurate or to scale. It is intended to give a general representation of the property's layout and dimensions. The actual measurements, proportions, and features of the property may differ from those depicted in the floor plan. It is highly recommended to verify the dimensions, room sizes, and overall layout through an independent inspection or by consulting with a professional surveyor or architect. Any discrepancies between the floor plan and the physical property should be assessed and confirmed during an in-person visit or through appropriate channels. This floor plan disclosure is provided to ensure that potential buyers are aware of the limitations and potential discrepancies that may exist in the accuracy of the floor plan. It is essential to rely on verified measurements and professional advice when making decisions related to the property.

RESIDENCE 1

Second Floor

*two sixty one
tappan street*



COMPASS

BUSHARI

The provided floor plan is for illustrative purposes only and may not be entirely accurate or to scale. It is intended to give a general representation of the property's layout and dimensions. The actual measurements, proportions, and features of the property may differ from those depicted in the floor plan. It is highly recommended to verify the dimensions, room sizes, and overall layout through an independent inspection or by consulting with a professional surveyor or architect. Any discrepancies between the floor plan and the physical property should be assessed and confirmed during an in-person visit or through appropriate channels. This floor plan disclosure is provided to ensure that potential buyers are aware of the limitations and potential discrepancies that may exist in the accuracy of the floor plan. It is essential to rely on verified measurements and professional advice when making decisions related to the property.

RESIDENCE 1

Third Floor

*two sixty one
tappan street*



COMPASS

BUSHARI

The provided floor plan is for illustrative purposes only and may not be entirely accurate or to scale. It is intended to give a general representation of the property's layout and dimensions. The actual measurements, proportions, and features of the property may differ from those depicted in the floor plan. It is highly recommended to verify the dimensions, room sizes, and overall layout through an independent inspection or by consulting with a professional surveyor or architect. Any discrepancies between the floor plan and the physical property should be assessed and confirmed during an in-person visit or through appropriate channels. This floor plan disclosure is provided to ensure that potential buyers are aware of the limitations and potential discrepancies that may exist in the accuracy of the floor plan. It is essential to rely on verified measurements and professional advice when making decisions related to the property.